



ALMERA



NISSAN ALMERA

CONNECTED AND MORE REFINED



NISSAN ALMERA THE SPACIOUS SEDAN FOR THOSE WHO WANT TO **LIVE LARGE**

The world has changed. Small is big. Smart is sexy. And living richly isn't about how much you spend. The perfect car for this new way to roll? The Nissan ALMERA. With a spacious interior, advanced technology and performance that's as responsible as it is responsive. Change is good. Especially when it looks like this. The Nissan ALMERA is going to dare you to open your mind and re-examine your expectations from a car.





PERFORMANCE AND ECONOMY

The Nissan ALMERA is powered by an impressive 1.5 litre petrol engine available in manual or automatic transmission, delivering 73kW of power with 134Nm of torque – enough to get you from A to B in no time. While the Nissan ALMERA feels like a big car on the inside, it still offers small sedan efficiency. When it comes to performance and outstanding fuel economy, the Nissan ALMERA really is the intelligent choice for those looking for big value for money.



THE FREEDOM

TO EXPLORE NEW DESTINATIONS





INTERIOR

Step inside and the Nissan ALMERA delivers confident and modern sophistication that is practical, ergonomic, functional and aesthetically pleasing. The intelligently designed cabin layout puts all the controls you need right at your fingertips, from audio control to boot release, powered mirror control to remote central locking.

High quality finishes compliment the vehicle's stylish design, while easy-to-read dials keep the driver up to date at all times. Passenger comfort is also not compromised, the Nissan ALMERA sports a rear centre armrest with cupholders, rear fan and adjustable rear head rests.

The Nissan ALMERA's audio system features Bluetooth audio streaming, MP3 and USB connectivity so you can enjoy your tunes just the way you like them. With handsfree Bluetooth capability and steering wheel audio controls, you are safe and in complete control wherever you drive. Now that sounds good.





SPACIOUS COMFORT

Welcome to a big new day, where generous legroom is a given, where headroom is never in short supply, and where even the tallest can stretch out in comfort. Thanks to the revolutionary design of the Nissan ALMERA, owners can enjoy class-defying comfort and versatility in a beautifully compact package. The Nissan ALMERA provides the perfect balance of superior space for driver, passengers and luggage, all in one compact sedan that's truly big enough for everyone. Think premium space minus the premium price tag.



BIG ON BOOT SPACE

The boot space in the Nissan ALMERA is astonishingly generous. A full 490 litres of capacity with a deep loading area, a low loading sill and smooth surfacing inside allows you to load up with room to spare.

With enough boot space for the whole family's needs, shopping, sporting events or holidays all become pleasure cruises.



SEES THE UNFORESEEN

With clever engineering and technology, the new Nissan ALMERA makes reversing a breeze with rear parking sensors* that ensure even the tightest parking spots become a precision exercise.

* Available on Acenta & Tekna models

SAFETY

The Nissan ALMERA comes with an impressive array of safety features that are designed to keep you and your passengers safe and sound.

HELPS THE DRIVER TO MAINTAIN COMFORTABLE DRIVING

Even when a risk has not appeared, Nissan technologies make it easier for the driver to maintain safe driving conditions. Some of these innovations reduce the driver's burden, while others enhance visibility and awareness of the immediate surroundings at night and when parking, for example.

HELPS THE DRIVER TO RECOVER FROM DANGEROUS CONDITIONS TO SAFE DRIVING

When a risk appears, warnings and automatic countermeasures help the driver avoid it.

HELPS MINIMIZE THE DAMAGE WHEN A COLLISION IS UNAVOIDABLE

In cases when a crash cannot be avoided, additional Nissan technology helps reduce injuries and damage by activating the brakes, restraining passengers, and applying other measures.



SAFETY SHIELD

Safety Shield
In the commitment to "Real World Safety", Nissan pursues innovation as part of its Safety Shield concept. Based on the idea that cars should help protect people, advanced, proactive safety technologies help driver and passengers to avoid danger and injury in a wide range of circumstances.



Electronic Brake-force Distribution (EBD) sends extra energy to the rear brakes if and when it senses additional weight in the back of the vehicle, increasing stopping power and reducing stopping distance.



Driver and passenger SRS (Supplemental Restraint System) airbags deploy automatically in the event of severe frontal impact, reducing the risk of injury.



Zone Body Construction features advanced safety technology that includes a clearly defined crushable zone to absorb and disperse impacts, with a high-strength cabin safety zone to maximise passenger protection.



The Anti-lock Braking System (ABS) prevents wheel lockup during heavy braking which allows the driver to continue steering safely.



Forewarned is forearmed
Halogen headlights ensure excellent visibility for increased open-road safety, allowing you to see what's ahead better than ever before.



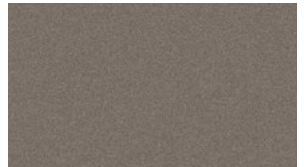
COLOURS



M - Metallic
S - Solid

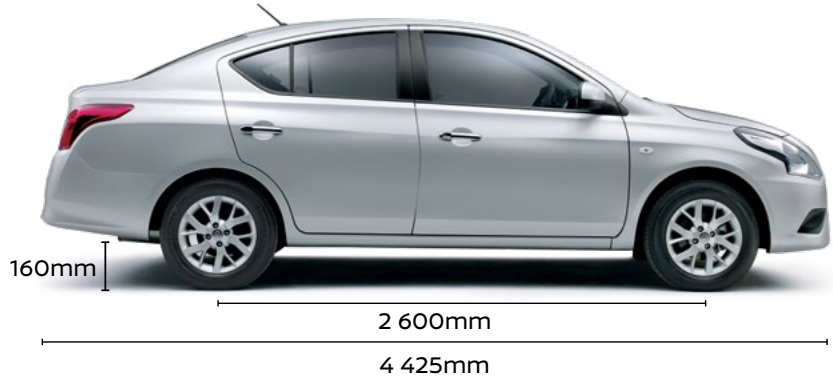
TRIM

Stylish yet practical



Greige fabric.

DIMENSIONS



PEACE OF MIND

OUR PROMISE TO YOU

At Nissan we keep our promises and take care of our family. Servicing and repairing your Nissan at an authorised Nissan dealership is the way to go. Our Nissan technicians are highly trained specialists that know your Nissan better than anyone. They will use Genuine Nissan Parts, Genuine Nissan Accessories to ensure quality, reliability and to keep your vehicle performing to optimum standards. Nissan aims to keep you and your vehicle on the road with total peace of mind - for as long as possible.

THIS IS A NISSAN AFTERSALES PROMISE.



OUR PROMISE. YOUR EXPERIENCE

Model		Almera 1.5 Acenta	Almera 1.5 Tekna
Body Type		Sedan	Sedan
Transmission		4-speed AT	4-speed AT
ENGINE AND PERFORMANCE			
Maximum Power	kw/rpm	73/6,000	73/6,000
Maximum Torque	Nm/rpm	134/4,000	134/4,000
Engine Displacement	cc	1498	1498
Fuel Type		Petrol	Petrol
Fuel Tank Capacity	litres	41	41
Emissions Category		EURO4	EURO4
DIMENSIONS			
Overall Length of Vehicle	mm	4,425	4,425
Overall Width of Vehicle	mm	1,695	1,695
Overall Height of Vehicle	mm	1,505	1,505
Wheelbase	mm	2,600	2,600
Ground Clearance	mm	155	160
Tare Mass	kg	1042	1042
Min. Turning Circle	m	5.2	5.2
MECHANISM			
Brake type - Front discs, rear drums		Standard	Standard
Suspension - Front		MacPherson Strut	MacPherson Strut
Suspension - Rear		H-type Torsion Beam	H-type Torsion Beam
WHEELS/TYRES			
Wheel Size/Type		15" Alloy	15" Alloy
Wheel Dimensions (front;back)		185/65 R15	185/65 R15
Spare Wheel		Full Size	Full Size
SAFETY			
Airbags		Driver and Passenger	Driver and Passenger
Front Seat Belts		3 point ELR, Single Pretentioner with Load Limiter	3 point ELR, Single Pretentioner with Load Limiter
Rear Seatbelts		3 point ELR (left/right/centre)	3 point ELR (left/right/centre)
Seatbelt Reminder		Driver Only	Driver Only
ABS + EBD + Brake Assist (BA)		Standard	Standard
Rear Parking Sensors		Standard	Standard
High Mounted Stop Lamp		Standard	Standard
Immobilizer		Standard	Standard
EXTERIOR			
Coloured Bumper		Standard	Standard
Outside Door Handle		Chrome Plating	Chrome Plating
Door Waist Moulding		Resin colour (Black)	Resin colour (Black)

Model		Almera 1.5 Acenta AT	Almera 1.5 Tekna AT
COMFORT & CONVENIENCE			
Halogen Headlamp		Standard	Standard
Headlamp Auto Off Function (Follow me home)		Standard	Standard
Door Mirror		Manual folding & Electric operating, coloured	Manual folding & Electric operating, coloured
Front Wiper		Variable Intermittent & Mist Wipe	Variable Intermittent & Mist Wipe
Front Fog-Lamp		Standard	Standard
Clock: Digital		Standard	Standard
Air Conditioner		Manual	Auto
Air Conditioner Rear Vent		Standard	Standard
Audio: 2DIN AM/FM Radio, CD, MP3 with AUX & USB		Standard	Standard
Speakers		4	4
Handsfree Bluetooth		Standard	Standard
Driver's Seat Function		Slide & Reclining; & Lifter	Slide & Reclining; & Lifter
Passenger Seat		Manual Slide & Reclining	Manual Slide & Reclining
Rear Seat		Fixed with Centre Arm Rest	Fixed with Centre Arm Rest
Luggage room / Trunk lamp		Standard	Standard
DRIVER'S AREA			
Tachometer		Standard	Standard
Steering Wheel: Urethane		Standard	Standard
Powered & Tilt Steering Wheel		Standard	Standard
Steering Wheel Controls		Handsfree Bluetooth & audio	Handsfree Bluetooth & audio
Power Door Lock - Driver with Speed Sensitive Auto Door Lock		Standard	Standard
Key with Remote Entry System		With Immobilizer & With Remote Key	With Immobilizer & With Remote Key
Power Window		Front & Rear	Front & Rear
Drive Computer		Odo & Trip - Fuel Consumption & Cruising Range	Odo & Trip - Fuel Consumption & Cruising Range
Room Lamp		Standard	Standard
Map Lamp		Standard	Standard
Cup Holder		Centre Console: FR *2, Door *2 Bottles, Rear Armrest *2	Centre Console: FR *2, Door *2 Bottles, Rear Armrest *2
Glovebox with Lid		Standard	Standard
Sunvisor		Driver (with vanity mirror) + Passenger (with vanity mirror)	Driver (with vanity mirror) + Passenger (with vanity mirror)
Power Outlet: 12 V		Standard	Standard



Nissan's commitment to the environment

Nissan's environmental philosophy embraces people, vehicles and nature. In the pursuit of a sustainable mobile society, the Nissan Green Program aims to reduce the environmental impact of Nissan vehicles at every stage of the vehicle life cycle, while corporate activities address environmental challenges.

NISSAN'S commitment to quality: to provide all customers with a consistently high level of quality, Nissan applies the standard worldwide, to ensure that all Nissan owners enjoy peace of mind for the lives of their vehicles. The approach is based on quality from the customer's perspective on three key elements: 1. The expectation of a smooth driving experience with complete peace of mind. 2. The intangible appeal of a vehicle, its power to captivate and excite, with features that capture attention and imagination. 3. The level of attentiveness and service during the sales process, and long after the sale is concluded.

Every effort has been made to ensure that the content of this brochure is correct at the time of going to print (January 2022). This brochure has been produced featuring prototype or accessorized vehicles exhibited at motor shows and, in accordance with the company's policy of continuously improving its products, Nissan reserves the right to change the specification and the vehicles described and shown in this brochure at any time. Nissan dealers will be informed of any such modifications as quickly as possible. Please check with your local Nissan dealer to receive the most up-to-date information. Due to the limitations of the printing processes used, the colours shown in this brochure may differ slightly from the actual colours of the paint and interior trim materials used. All rights reserved. Reproduction in whole or part of this brochure without the written permission from Nissan is forbidden.



Nissan Intelligent Mobility moves you one step ahead. In cars that feel like an extension of you, helping you see more and sense more, reacting with you, and sometimes even for you. Nissan Intelligent Mobility is about a better future – moving us to a world that’s safer, more sustainable, and exciting.